

Instructions: CLASSIFY ANIMALS AS BLOOD FEEDERS OR NON-BLOODFEEDERS

1. Take out the **ADULT CARDS**, and place them on the correct boxes
2. March the **LARVA CARDS** with the correct adult cards
3. March the **HABITAT CARDS** with the correct adult and larvae cards

Blood feeders

Asian Tiger Mosquito

- Proboscis: Yes
- Feature: Small
- Color: Black with white stripes
- Habitat: Artificial Containers

Northern House mosquito

- Proboscis: Yes
- Feature: Lays a mass of eggs called a "Raft"
- Color: **Brown, dull color**
- Habitat: Does very well in Polluted and dirty habitats

Common Malaria Mosquito

- Proboscis: Yes
- Feature: Adults stick their abdomen in the air when standing and feeding
- Color: **Dark brown**
- Habitat: large grassy swamps and rice paddies

Eastern salt marsh mosquito

- Proboscis: Yes
- Feature: Stripe on proboscis
- Color: **brown with dusty spots**
- Habitat: Salt marshes



Non-blood feeders

Crane fly

- Proboscis: No
- Feature: Very large size
- Color: **Brown**
- Habitat: Often in streams (but also in rivers)

Elephant Mosquito

- Proboscis: No
- Feature: Large and shiny
- Color: **Brilliant shiny colors**
- Habitat: Tree holes

Midge

- Proboscis: No
- Feature: Males with furry antennae
- Color: Black
- Habitat: Many types including running and standing water

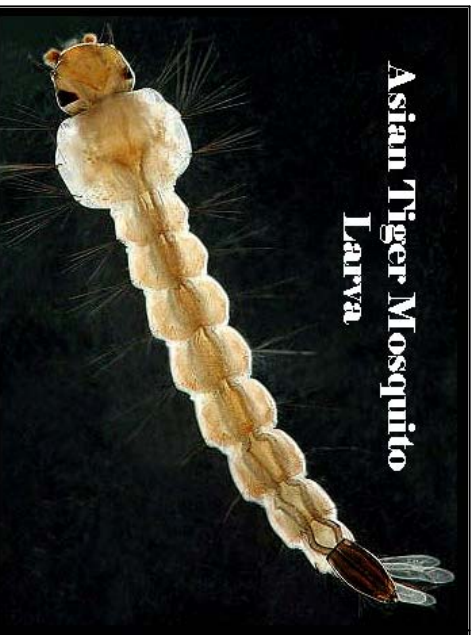
Mayfly

- Proboscis: No
- Feature: Appendages at tip of abdomen called "Cerci"
- Color: **Brown**
- Habitat: mainly rivers and streams

Phantom Crane fly

- Proboscis: No
- Feature: Long striped legs
- Color: Black and white
- Habitat: Mainly ponds and lakes





**Asian Tiger Mosquito
Larva**



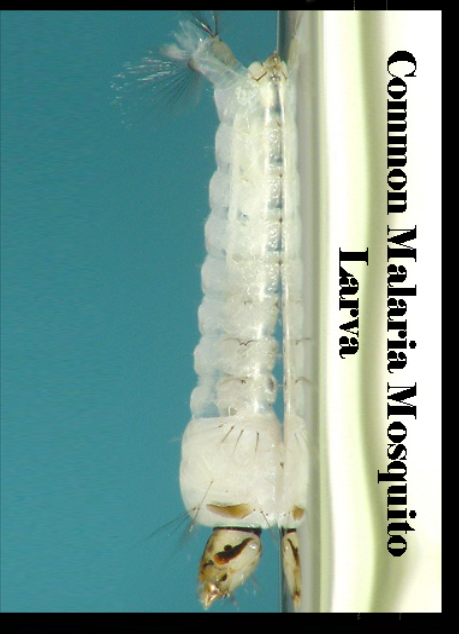
**Phantom Crane Fly
Larva**



Mayfly nymph



**Eastern Salt marsh Mosquito
Larva**



**Common Malaria Mosquito
Larva**



**Elephant Mosquito
Larva**



**Northern House Mosquito
Larvae**



Crane fly Larvae



Midge Larva

Larva

Cards

Larva

Cards

Larva

Cards

Larva

Cards

Larva

Cards

Larva

Cards

Larva

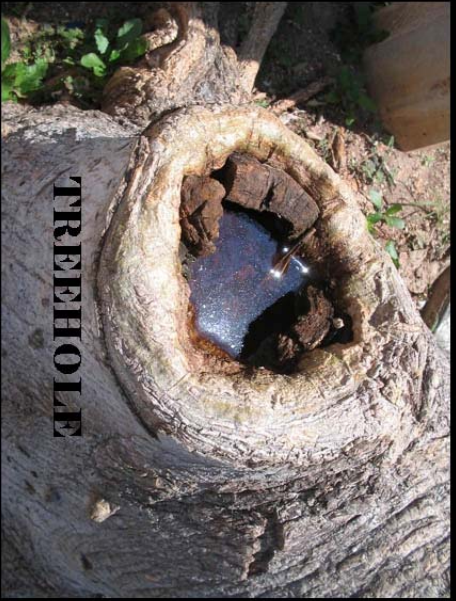
Cards

Larva

Cards

Larva

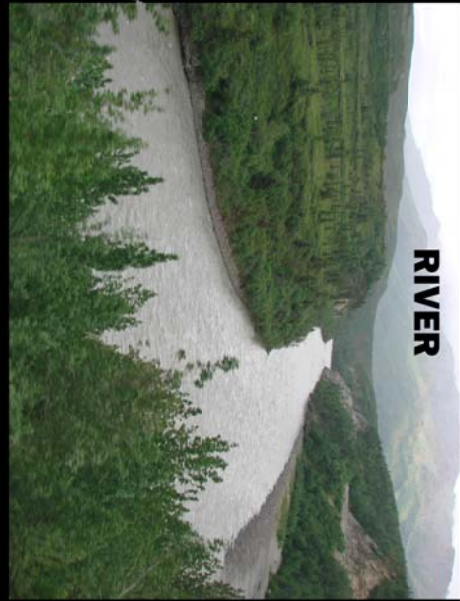
Cards



TREEHOLE



STREAM



RIVER



DIRTY POOL



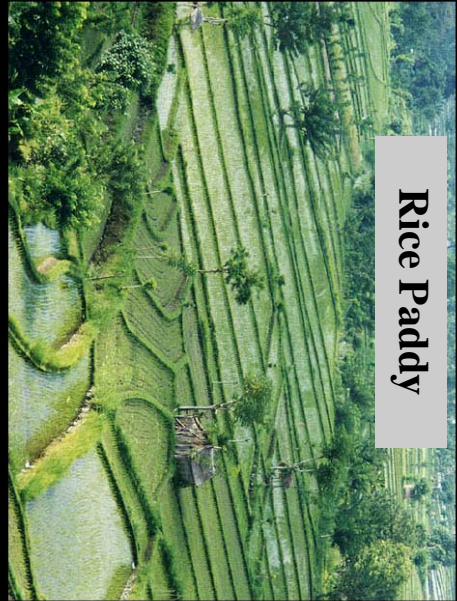
SALT MARSH



LAKE



CONTAINER



Rice Paddy



MANY TYPES OF HABITATS

Habitat Cards

Asian Tiger Mosquito

Females of the Asian tiger mosquito lay their eggs in backyard containers. They are very aggressive human biting mosquitoes, and will even bite during the day.

Habitat Cards

Northern House mosquito

The Northern house mosquito gets its name because it is often found resting inside houses. Females generally do not bite people, but prefer to bite birds instead.

Habitat Cards

Elephant Mosquito

The elephant mosquito is a good mosquito found in New Jersey. The adults do not feed on blood, but instead feed on the nectar in plants. As a result, they help pollinate flowers. Larvae are also good because they eat bad mosquito larvae.

Habitat Cards

Common Malaria Mosquito

Over a hundred years ago, Malaria (a disease spread by mosquitoes) was common in the United States. The mosquito responsible for transmitting it to humans was the common malaria mosquito. Although Malaria no longer occurs in New Jersey, the mosquito is still abundant today.

Habitat Cards

Eastern salt marsh mosquito

This mosquito lays her eggs in salt marshes. During the highest moon tides, huge numbers of eggs are hatched, which result in large swarms of this mosquito.

Habitat Cards

Crane fly

People often mistake crane flies for mosquitoes. Although they both have six legs and two pairs of wings, the crane fly does not have a proboscis. Crane flies are harmless and do not bite.

Habitat Cards

Midge

The midge is one of the closest relatives to the mosquito. Midges are very common insects, most of which, do not bite.

Habitat Cards

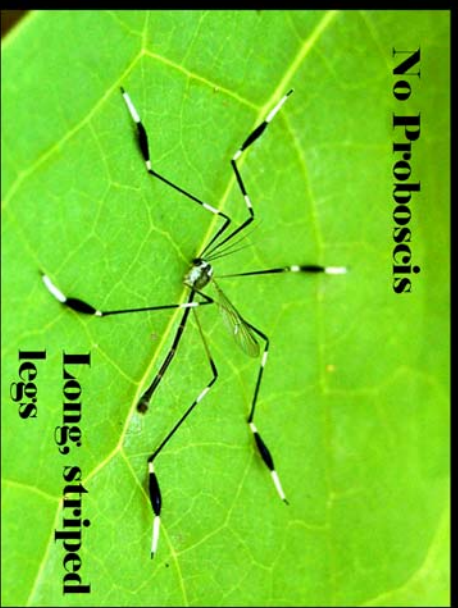
Phantom Crane fly

The coloration of the phantom crane fly resembles that of many mosquitoes. However, the phantom crane fly does not have a proboscis and doesn't bite.

Habitat Cards

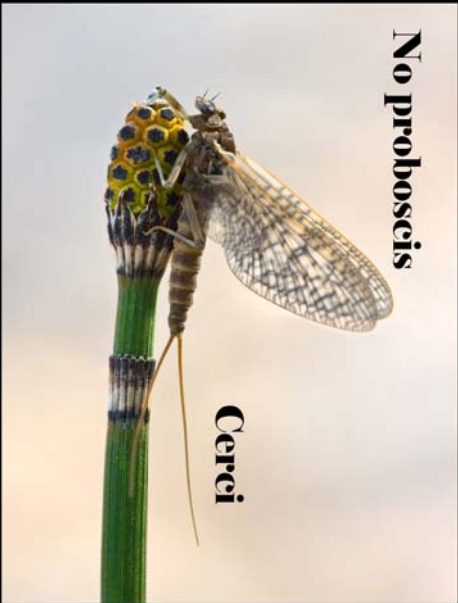
Mayfly

Immature mayflies are very common in clean water, such as ponds, lakes and streams, making them an important food source for fish. Mayfly adults live only a short time. They lack a proboscis and do not bite.



No Proboscis

Long, striped legs



No proboscis

Cerci



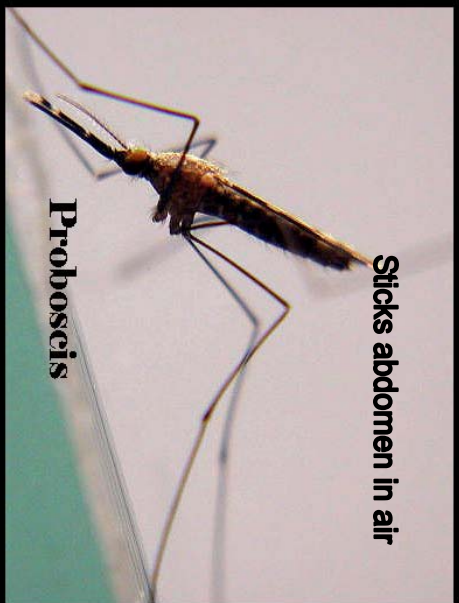
Black and white stripes

Proboscis



No proboscis

Males with feathery antennae



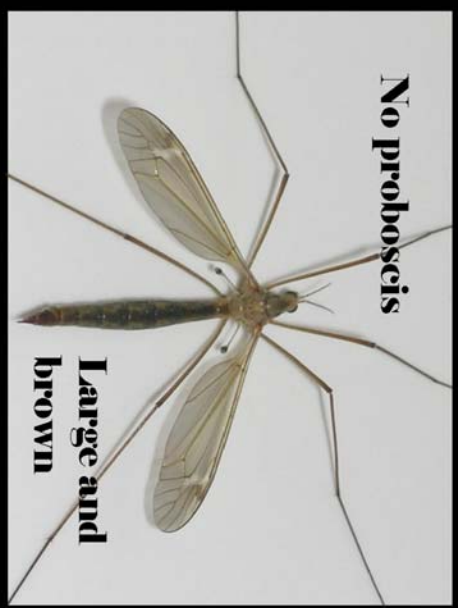
Sticks abdomen in air

Proboscis



Proboscis

Very large mosquito with brilliantly colored scales



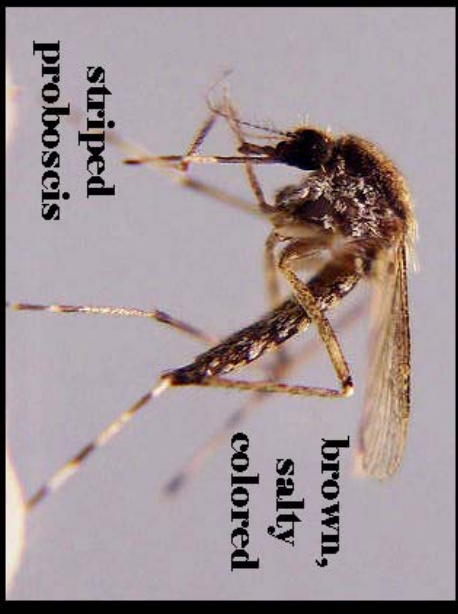
No proboscis

Large and brown



Proboscis

Egg Raft



brown, salty colored

striped proboscis

Adult

Cards

Adult

Cards

Adult

Cards

Adult

Cards

Adult

Cards

Adult

Cards

Adult

Cards

Adult

Cards

Adult

Cards