



Energy Summit 2007

LSU Center for Energy Studies

October 24, 2007

Richard Bedell

Manager

Louisiana Refining Division

Marathon 

Forward Looking Statement



Except for historical information, this presentation contains forward-looking information with respect to the construction of an expansion project at the Garyville refinery. These statements are subject to risks and uncertainties that could cause actual results to differ materially from those expressed or implied from such information. In accordance with the “safe harbor” provisions of the Private Securities Litigation Reform Act of 1995, Marathon Oil Corporation has included in its Annual Report on Form 10-K for the year ended December 31, 2006, and subsequent Forms 8-K and 10-Q, cautionary language identifying important factors, though not necessarily all such factors, that could cause future outcomes to differ materially from those set forth in the forward-looking statements.

Garyville Refinery Today



- ◆ 550 Employees
- ◆ 350 Full Time Contractors
- ◆ OSHA VPP Star
- ◆ EPA Performance Track
- ◆ 18th Largest US Refinery
- ◆ Last Grassroots US Refinery-1976

Garyville Major Expansion



- ◆ Projected \$3.2 billion Project
- ◆ Full conversion new refinery
- ◆ Ability to process wide range of crudes
- ◆ Adds 7.5 million gallons per day of clean fuels



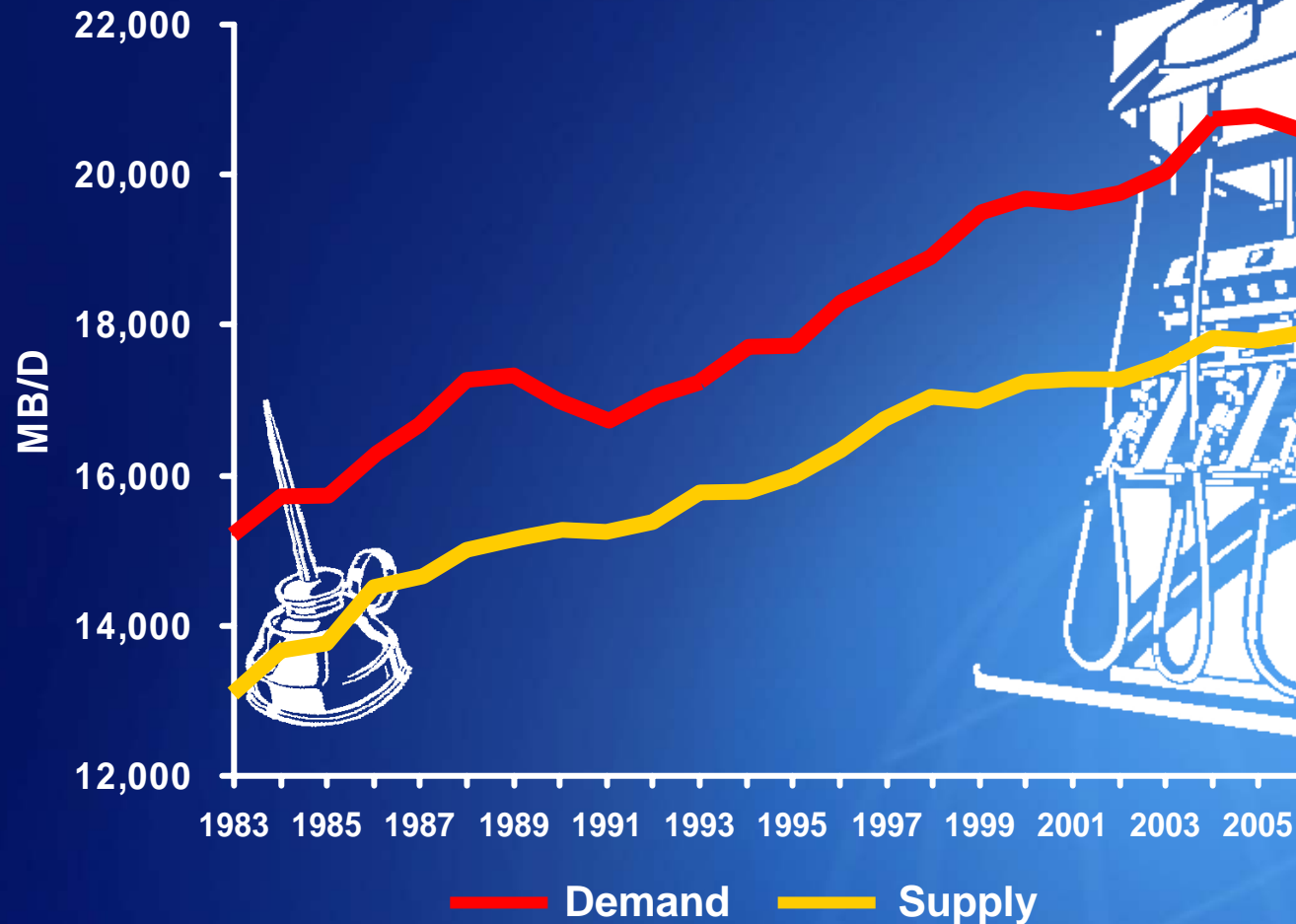


Garyville Major Expansion

- ◆ Crude 180,000 BPD
- ◆ Coker 44,000 BPD
- ◆ Reformer 65,000 BPD
- ◆ Hydrocracker 70,000 BPD
- ◆ Kero Hydrotreater 47,000 BPD
- ◆ Sulfur Plants
- ◆ Hydrogen Plant
- ◆ Tanks & Utilities



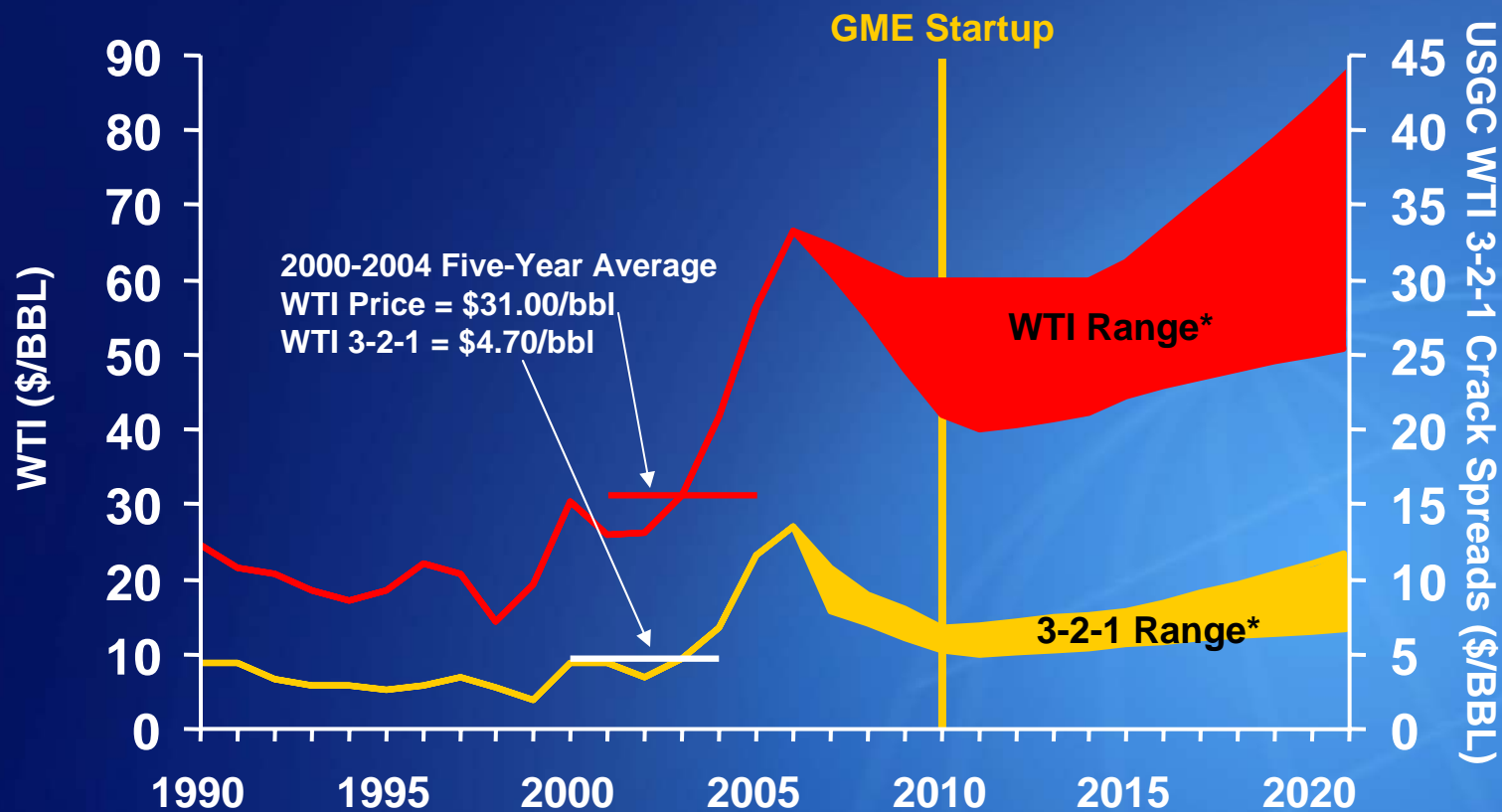
U.S. Refined Product Supply and Demand



A product gap characterized by growing volume and fuel complexity

Source: DOE

Investment Basis

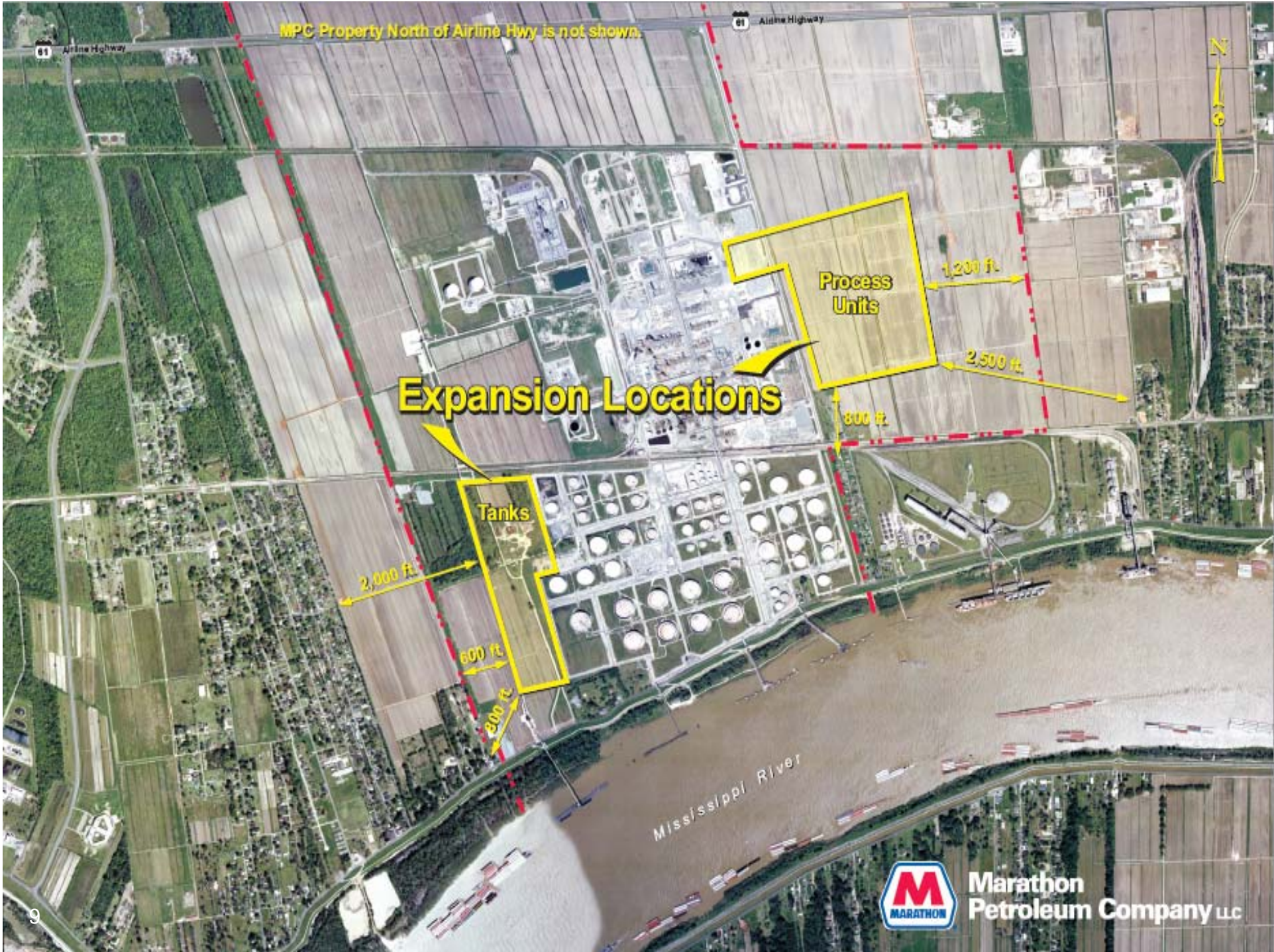


*Range includes survey data from CERA, Purvin & Gertz, DOE and others

Garyville Major Expansion

- ◆ Logistics available to participate in world markets
- ◆ Expansion economics are favorable to a grassroots construction
- ◆ Gulf Coast construction costs competitive with India and Middle East
- ◆ Leverages Marathon's most efficient and profitable downstream asset

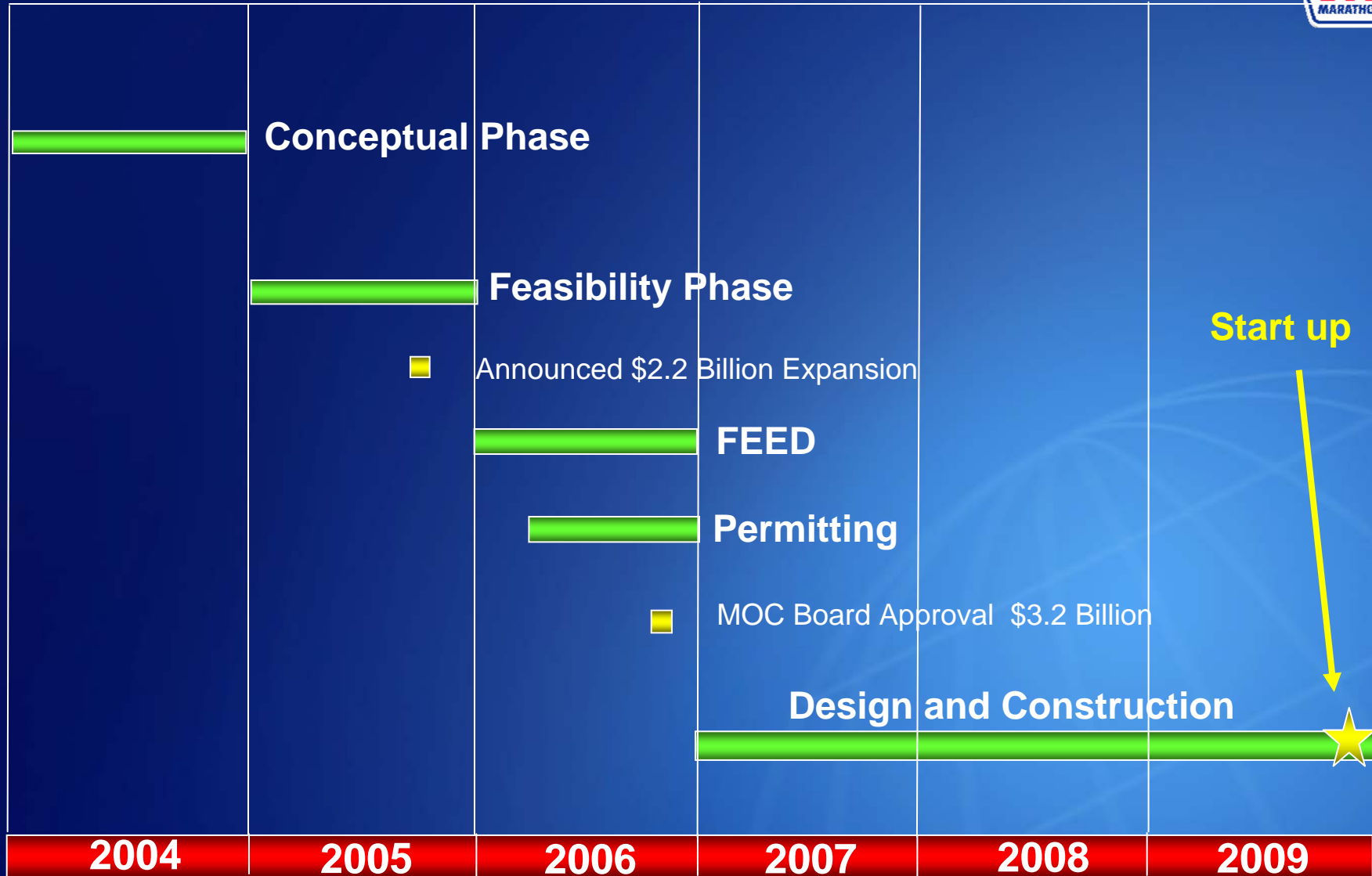




Construction Site



Project Timeline



Construction Schedule



2006	2007	2008	2009
	March Contractor to Begin Clearing Site	January Commence Steel Erection	March Complete Engineering Effort
	May Begin Hauling Fill	March Commence Piping Erection	May Begin Commissioning Activities
	July Commence Piling	July Commence Construction of Marine Facilities	October Mechanical Completion
December Detailed Engineering Effective Start	September Commence Foundations	December Critical Vessels Delivered to Site	December Start-Up

Construction Highlights



- ◆ 1 million cubic yards of dirt
- ◆ 20,000 piles to drive
- ◆ 300 miles of pipe
- ◆ 1,100 miles of wire and cable
- ◆ Worldwide Engineering-US, Mexico, India, Philippines
- ◆ Worldwide Procurement-US, Far East, Europe

Major Contractors



Job Fair



Incentive Programs



- ◆ LDEQ Expedited Permitting Program
- ◆ Gulf Opportunity Zone Bonds
- ◆ Quality Jobs Program
- ◆ Industrial Property Tax Exemptions
- ◆ 2006 Energy Bill 50% Expense Election
- ◆ State Training Grants



Economic Impacts



- ◆ 2000-4000 Construction Jobs
- ◆ 280 Full Time Marathon and Contractor Jobs
- ◆ \$60 million Parish Sales Taxes
- ◆ \$500 million Local Business Transactions
- ◆ \$30 million Taxes from Indirect Economic Activity



The screenshot shows the website for the Garyville Major Expansion (GME). The browser window title is "explorer". The address bar is empty. The website header includes the Marathon logo, navigation links for "GME HOME", "TERMS", "MARATHON OIL CORPORATION", and "MARATHON PETROLEUM COMPANY LLC", and the main title "Garyville Major Expansion" with the tagline "Energy for the Future". A navigation menu contains links for "Home", "GME Overview", "About Marathon", "Jobs for Louisiana", "NewsRoom", and "Contact Us". The main content area features a large image of the refinery at night with the text: "Welcome to the Garyville Major Expansion (GME) web site. The GME is one of the largest construction projects under way in the U.S. We hope that you will find this information interesting and informative." Below the image is a small caption "Current Garyville Refinery". To the right, there is a "Current News:" section with three bullet points: "GME Construction Fact Sheet", "Marathon Job Fair Set for April 28", and "Marathon's Garyville Refinery Expansion Project Expected To Create Jobs For Louisiana". Below the news is a "More News >>" link and a "GME Energy for the Future" logo. The footer contains the copyright notice "©2007 Marathon Petroleum Company LLC" and "Powered by PIER — an AudienceCentral product." The taskbar at the bottom shows "Microsoft PowerPoint - [...]" and the system clock "3:00 PM".

