

Strategic Planning Update Business Manager's Meeting

October 11, 2022



LSU

**Office of Strategy
& Strategic Planning**

Strategic Planning Update

- Two Plans in Development – System and Flagship
- Creating the ‘Scholarship First Agenda’
- Values and Vision near final
- Structure set and in action
 - Governance, Integration Committee
 - Working Groups (300+) ... 6x Primary, 7x Additional Research ... Faculty, Staff, Students
 - 3x Advisory Boards ... Alumni, Industry Community (44 individuals)
 - Engagement with Faculty/Staff Senates, Affinity Groups ... more to follow
 - Survey responses reviewed and shared (~12K responses)
- Working Groups developing Goals, Objectives, Programs and Measures ... First Draft 8/15
- Building assessment architecture
- Communications closely integrated and developing comms/marketing rollout plan
- Closely coordinating with Foundation and next capital campaign

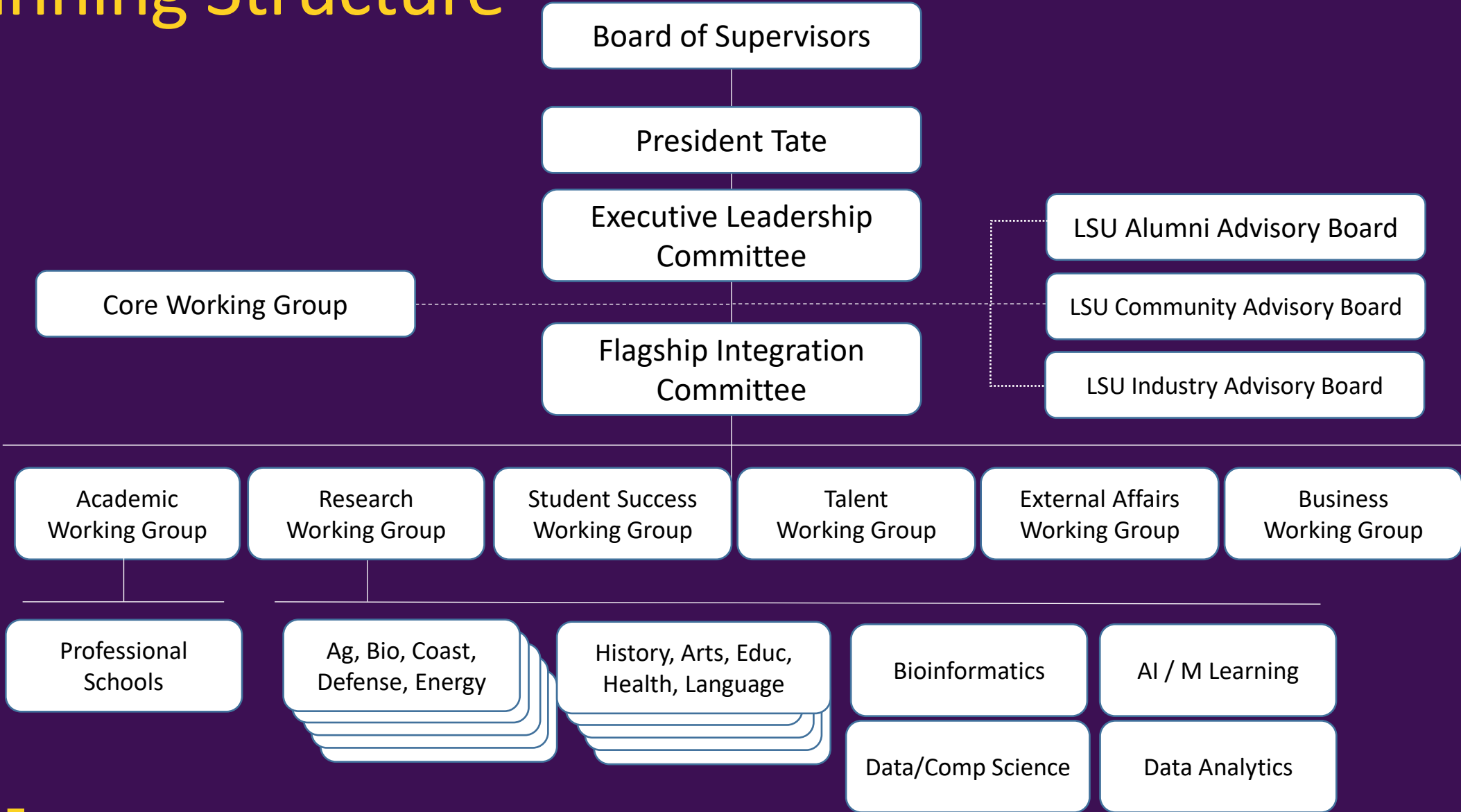
LSU A&M 2017



LSU System



Planning Structure



* DEI expertise embedded in all working groups

Advisory Board Feedback

- Maintain **clear priorities and institutional focus**
- **LSU must lead** to elevate Louisiana
- **Alignment** across colleges and centers is essential
- LSU must remain **agile** to remain relevant – with rapid changes in industry and society
- LSU must also remain **flexible** in workforce development in close partnership with business & industry
- **LSU graduates are leading** in multiple sectors of industry and government
- LSU must be **more accessible** to the local community in business and workforce development
- The LSU System should work closely **to elevate** all parts of the state and region
- LSU must continue **to improve** in external communications
- **LSU provides hope and a sense of community**

Alumni Advisory Board

- | | |
|--------------------|------------------|
| - Bill Balhoff | - Harry Longwell |
| - Sarah Borders | - Antonio Lucio |
| - Carol Calkins | - Roy Martin |
| - Clarence Cazalot | - Gordon Monk |
| - Katrina Dunn | - Jady Regard |
| - John Engquist | - Beverly Shea |
| - Perry Franklin | - Nick Speyrer |
| - Adrian King | - Theo Williams |

Industry Advisory Board

- | | |
|-------------------|----------------------|
| - Mike Albano | - Lenny Lemoine |
| - Craig Bowser | - Erin Wesley |
| - Charles Dabadie | - Clay Neff |
| - Ayame Dinkler | - Beth O'Quinn |
| - Rhoman Hardy | - Christy Reeves |
| - Suzette Kent | - Stephen Waguespack |

Community Advisory Board

- | | |
|---------------------|---------------------|
| - Tim Barfield | - Courtney Scott |
| - George Bell | - John Spain |
| - Stephanie Cargile | - Terrie Sterling |
| - David Fluker | - Deborah Sternberg |
| - Michael Jackson | - Boo Thomas |
| - Raymond Jetson | - Michael Tipton |
| - Adam Knapp | - Kathy Victorian |
| - Al Moreau | - Keith Waddell |

Values and Vision (Draft)

Excellence, Integrity, and Community

- Empower **Excellence**. We commit to the constant pursuit of enriching, innovative, and impactful outcomes in learning, discovery, and service.
- Embody **Integrity**. We seek truth and act with courage, honesty, and accountability to elevate each other and Louisiana.
- Embrace **Community**. We champion the strength, talent, and diversity of our people and value the culture and history of our state – together.

LSU is a comprehensive research university, the **Flagship** of and for the state, focused and committed **to build a more healthy, prosperous and secure future for Louisiana.**

The Scholarship First Agenda



A framework and commitment to *elevate students and our state* with an institutional focus on learning and discovery

1 Essential resources ... **People, Partnerships and Priorities**

2 priorities aligned with objectives

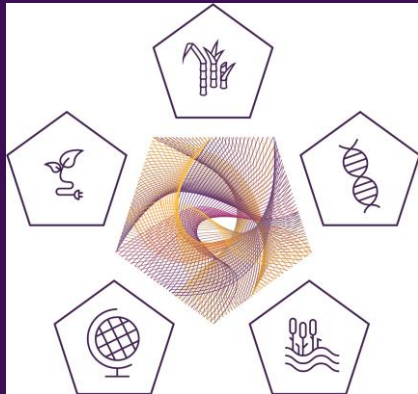
- **To Secure our Future**
- **To Elevate our Lives**
- **To Advance our State**

3 towards a university vision – **health, prosperity and security for Louisiana**

Framing Ideas



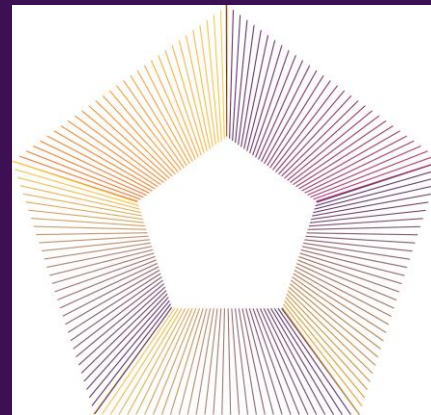
At the 'Core' of the Plan
To Secure the Future



*Institutional
Focus and prioritization*

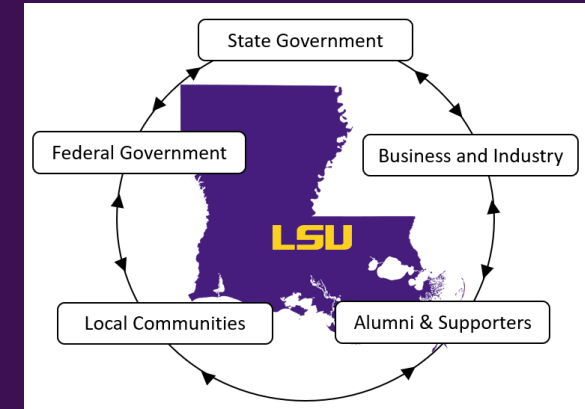
From the 'Core' expands the
LSU Community of disciplines

To Elevate Lives



*Inter-disciplinary collaboration
and inclusion*

To Create Cycles of Opportunity
To Advance the State



*Generating Student, State
and Community Impact*