

**LSU**  
**Deposit and Collateral Report**  
**For the Quarter Ended September 30, 2024**

Deposits Requiring Posting of Collateral:	Demand Deposit Sweep/MMA Repurchase	Certificates of Deposit	Total Deposits in Financial Institutions	Collateral (1)
<b>LSU A&amp;M, LSU Alexandria, LSU Eunice, LSU Shreveport, and LSU Health New Orleans</b>				
Chase - LSU, Health Plan Premium	\$ 155,420,994		\$ 155,420,994	\$ 215,207,764
Cottonport Bank - LSU Ag Center	4,435,935		4,435,935	5,122,392
Capital One - LSU-A	21,405,679		21,405,679	21,405,679
St. Landry Bank - LSU-E	631,392		631,392	1,876,934
Campus Federal Credit Union - LSU-S		\$ 101,594	101,594	250,000
Capital One - LSU-S	48,113,083		48,113,083	48,817,804
Chase - HSCNO	162,861,890	18,600	162,880,490	201,124,577
<b>Total</b>	<b>\$ 392,868,973</b>	<b>\$ 120,194</b>	<b>\$ 392,989,167</b>	<b>\$ 493,805,150</b>
<b>LSU Health Shreveport</b>				
JPMC-Shreveport	\$ 77,023,782		\$ 77,023,782	\$ 98,184,181
JPMC-Shreveport Endowment Fds	1,342,838		1,342,838	
<b>Total</b>	<b>\$ 78,366,620</b>	<b>\$ -</b>	<b>\$ 78,366,620</b>	<b>\$ 98,184,181</b>
<b>LSU Health Care Services Division</b>				
JP Morgan Chase (HCSD)	\$ 90,464,031		\$ 90,464,031	\$ 120,246,917
Capital One (MCLNO Trust Fund)	5,856,694		5,856,694	5,968,828
<b>Total</b>	<b>\$ 96,320,725</b>	<b>\$ -</b>	<b>\$ 96,320,725</b>	<b>\$ 126,215,745</b>
<b>Total Requiring Collateral</b>	<b>\$ 567,556,318</b>	<b>\$ 120,194</b>	<b>\$ 567,676,512</b>	<b>\$ 718,205,076</b>
<b>Deposits In Trust or Federal Obligations Not Requiring Collateral</b>				
Federated Money Markets	\$ 9,863,417		\$ 9,863,417	
Federated Funds-Treas. Oblig. (2)	2,279,582		2,279,582	
<b>Total</b>	<b>\$ 12,142,999</b>	<b>\$ -</b>	<b>\$ 12,142,999</b>	
<b>Total Deposits</b>	<b>\$ 579,699,317</b>	<b>\$ 120,194</b>	<b>\$ 579,819,511</b>	

(1) Collateral amounts include FDIC coverage of \$250,000 on Demand Deposits, \$250,000 on CD's and \$250,000 by the National Credit Union Share Insurance Fund on deposits with Campus Federal Credit Union.

(2) One Group & Federated Funds are no-load, open ended mutual funds investing in U.S. Treasury obligations.



**LSU**  
**Investment Summary**  
**For the Quarter Ended September 30, 2024**

Fund Description	As of 7/1/2024	As of 9/30/2024		As of 12/31/2024		As of 3/31/2025		As of 06/30/2025	
	Value	Cost	Market Value	Cost	Market Value	Cost	Market Value	Cost	Market Value
<b>LSU Health Shreveport</b>									
<b>Current Funds</b>									
Cash/Sweeps S.	\$76,936,672	\$77,023,782	\$77,023,782						
<b>Cash/Sweeps</b>	<b>\$76,936,672</b>	<b>\$77,023,782</b>	<b>\$77,023,782</b>	<b>\$0</b>	<b>\$0</b>	<b>\$0</b>	<b>\$0</b>	<b>\$0</b>	<b>\$0</b>
Treasury Notes	\$86,767,768	\$90,088,485	\$91,263,114						
Agency Securities	\$1,998,366	\$0	\$0						
Mortgaged Backed Securities	\$10,178	\$10,751	\$10,139						
Municipal Bonds	\$3,963,881	\$4,266,626	\$4,007,147						
Corporate Bonds	\$20,776,084	\$19,951,242	\$19,185,057						
<b>Total</b>	<b>\$190,452,949</b>	<b>\$191,340,886</b>	<b>\$191,489,239</b>	<b>\$0</b>	<b>\$0</b>	<b>\$0</b>	<b>\$0</b>	<b>\$0</b>	<b>\$0</b>
<b>Endowment Funds</b>									
Cash/Sweeps	\$1,324,858	\$1,342,837	\$1,342,837						
Equity Securities	\$18,513	\$7,650	\$21,649						
Mutual Funds	\$80,107,064	\$75,780,349	\$84,846,669						
<b>Total</b>	<b>\$81,450,435</b>	<b>\$77,130,836</b>	<b>\$86,211,155</b>	<b>\$0</b>	<b>\$0</b>	<b>\$0</b>	<b>\$0</b>	<b>\$0</b>	<b>\$0</b>
<b>Grand Total</b>	<b>\$271,903,384</b>	<b>\$268,471,722</b>	<b>\$277,700,394</b>	<b>\$0</b>	<b>\$0</b>	<b>\$0</b>	<b>\$0</b>	<b>\$0</b>	<b>\$0</b>
<b>LSU HCSD</b>									
<b>Current Funds</b>									
Cash/Sweeps	\$89,394,210	\$90,464,031	\$90,464,031						
<b>Total</b>	<b>\$89,394,210</b>	<b>\$90,464,031</b>	<b>\$90,464,031</b>	<b>\$0</b>	<b>\$0</b>	<b>\$0</b>	<b>\$0</b>	<b>\$0</b>	<b>\$0</b>
<b>Other Funds</b>									
Cash/Sweeps	\$5,828,302	\$5,856,694	\$5,856,694						
Money Market Accounts/Repos	\$9,740,375	\$9,863,417	\$9,863,417						
Equity Securities	\$570,995	\$0	\$581,411						
<b>Total</b>	<b>\$16,139,672</b>	<b>\$15,720,111</b>	<b>\$16,301,522</b>	<b>\$0</b>	<b>\$0</b>	<b>\$0</b>	<b>\$0</b>	<b>\$0</b>	<b>\$0</b>
<b>Grand Total</b>	<b>\$105,533,882</b>	<b>\$106,184,142</b>	<b>\$106,765,553</b>	<b>\$0</b>	<b>\$0</b>	<b>\$0</b>	<b>\$0</b>	<b>\$0</b>	<b>\$0</b>
<b>System Total</b>	<b>\$1,250,537,464</b>	<b>\$1,473,244,422</b>	<b>\$1,427,472,382</b>	<b>\$0</b>	<b>\$0</b>	<b>\$0</b>	<b>\$0</b>	<b>\$0</b>	<b>\$0</b>

\* Negative balance in the cash/Sweeps section of the current funds does not represent an actual negative bank balance, rather it represents a timing difference of the allocation of the current funds.

\*\* Small endowment funds at LSUS were moved to the LSUS Foundation to accommodate Workday.

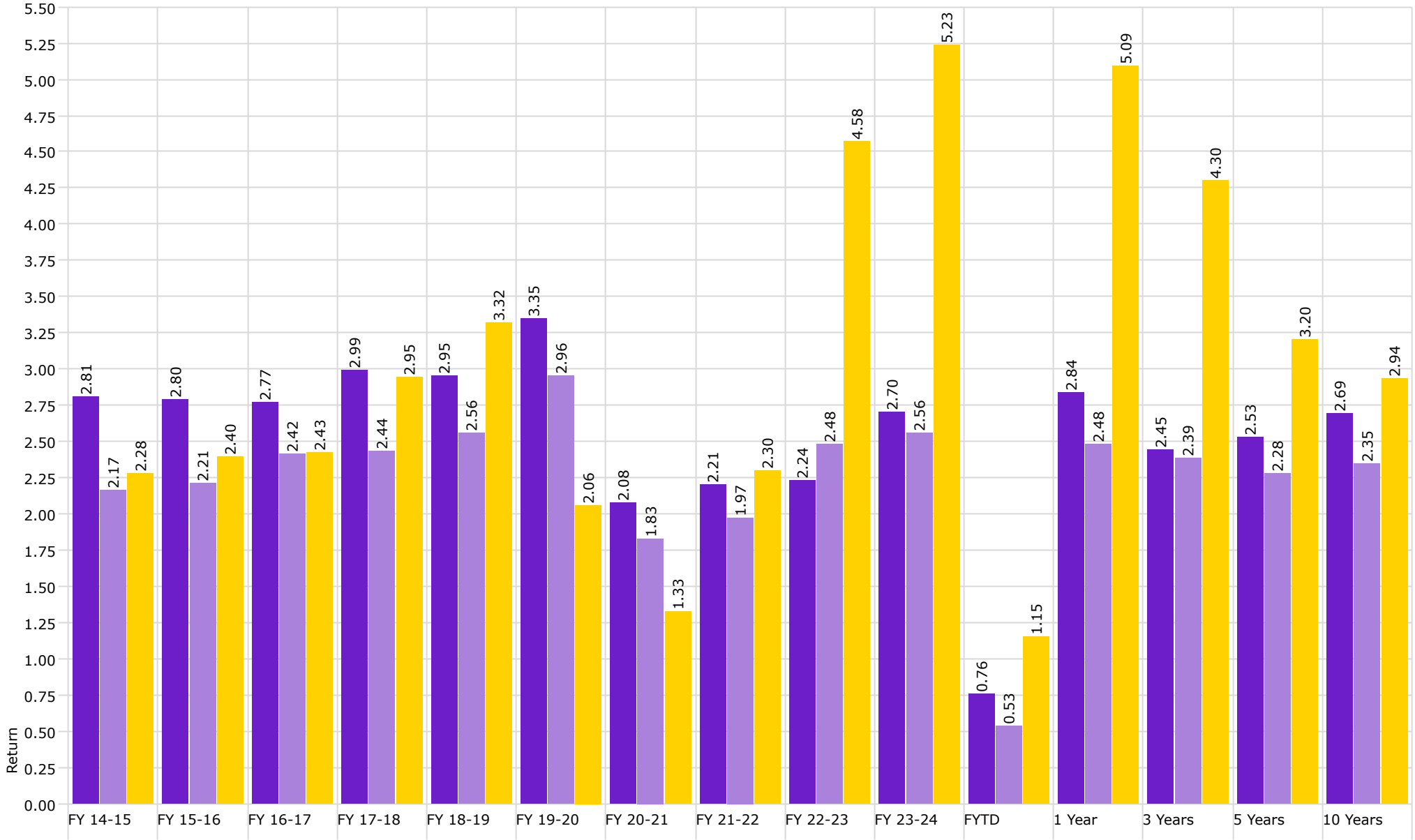
\*\*\* LSU Paid Campuses include the following: LSU, LSU Ag Center, LSUA, LSUE, LSUS, LSU Health New Orleans, and the LSU Pennington Biomedical Research Center.

Disclaimer: Pursuant to PM-9, corporate bonds/notes only available for investment beginning 7-1-2011.  
Louisiana law provides for restrictions on maturity and allocation and may effect benchmark comparisons.



# Investment Management Program Non Endowed Accounts **Realized Yield**

As of 9/30/2024



■ Non Endowed

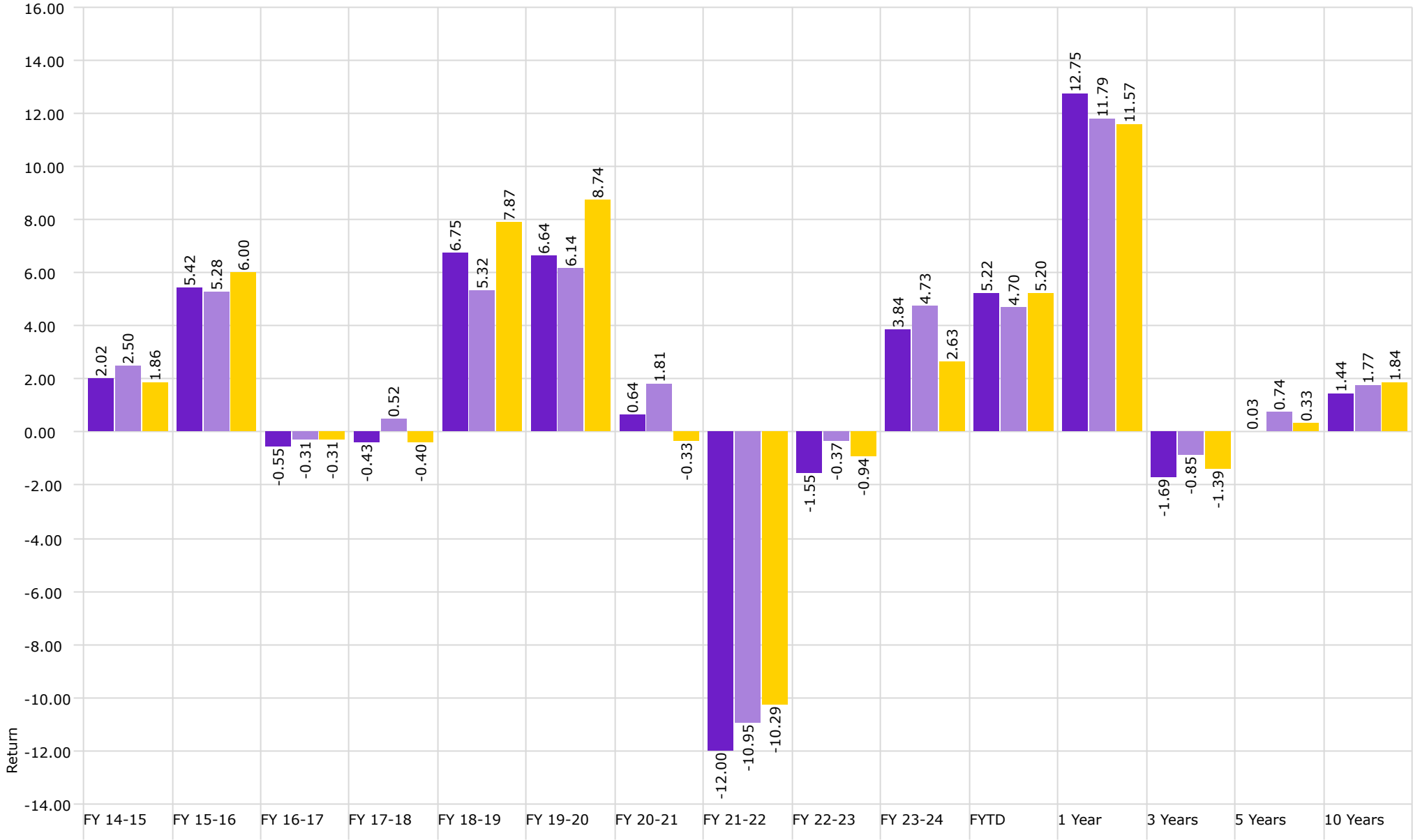
■ Health Plan

■ Barclays Aggregate Bond Index



# Investment Management Program Non Endowed Accounts **Total Return**

As of 9/30/2024



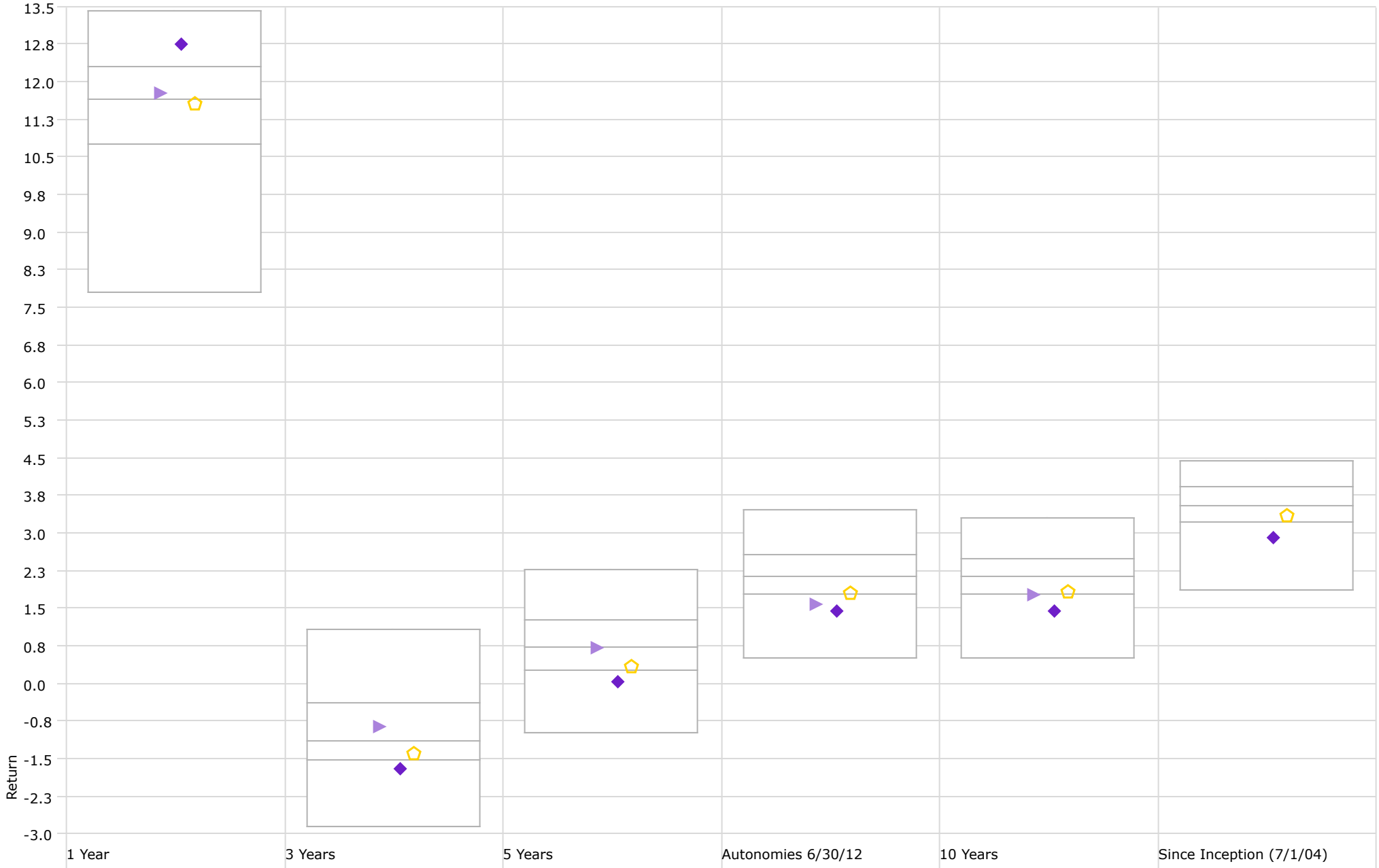
■ Non Endowed

■ Health Plan

■ Barclays Aggregate Bond Index

# Performance Relative to Peer Group

Peer Group (5-95%): All Managed Investments - U.S. - Intermediate Core Bond



◆ Non-Endowed

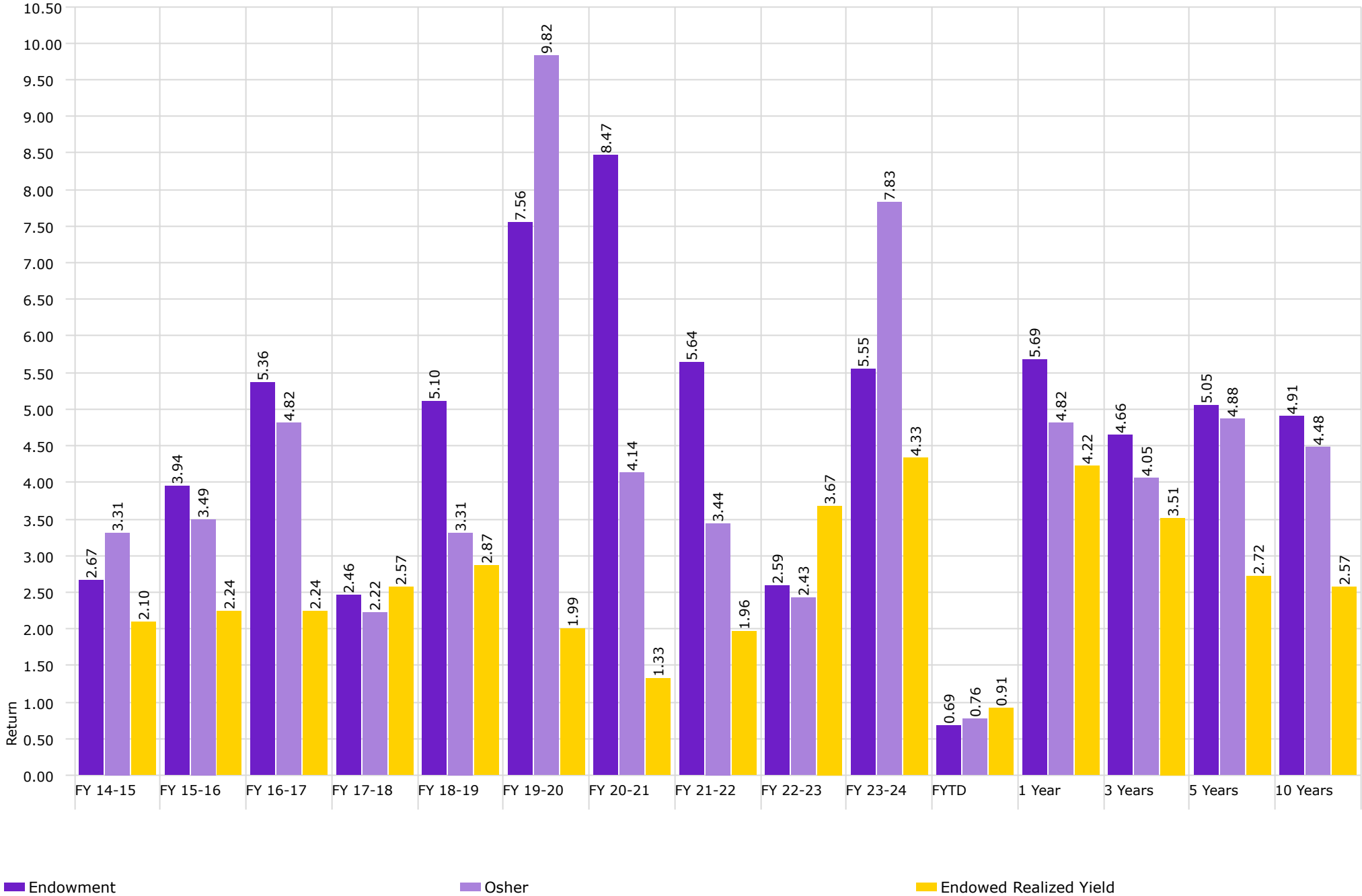
▶ Health Plan

⬠ Barclays Aggregate Bond Index



# Investment Management Program Endowed Accounts **Realized Yield**

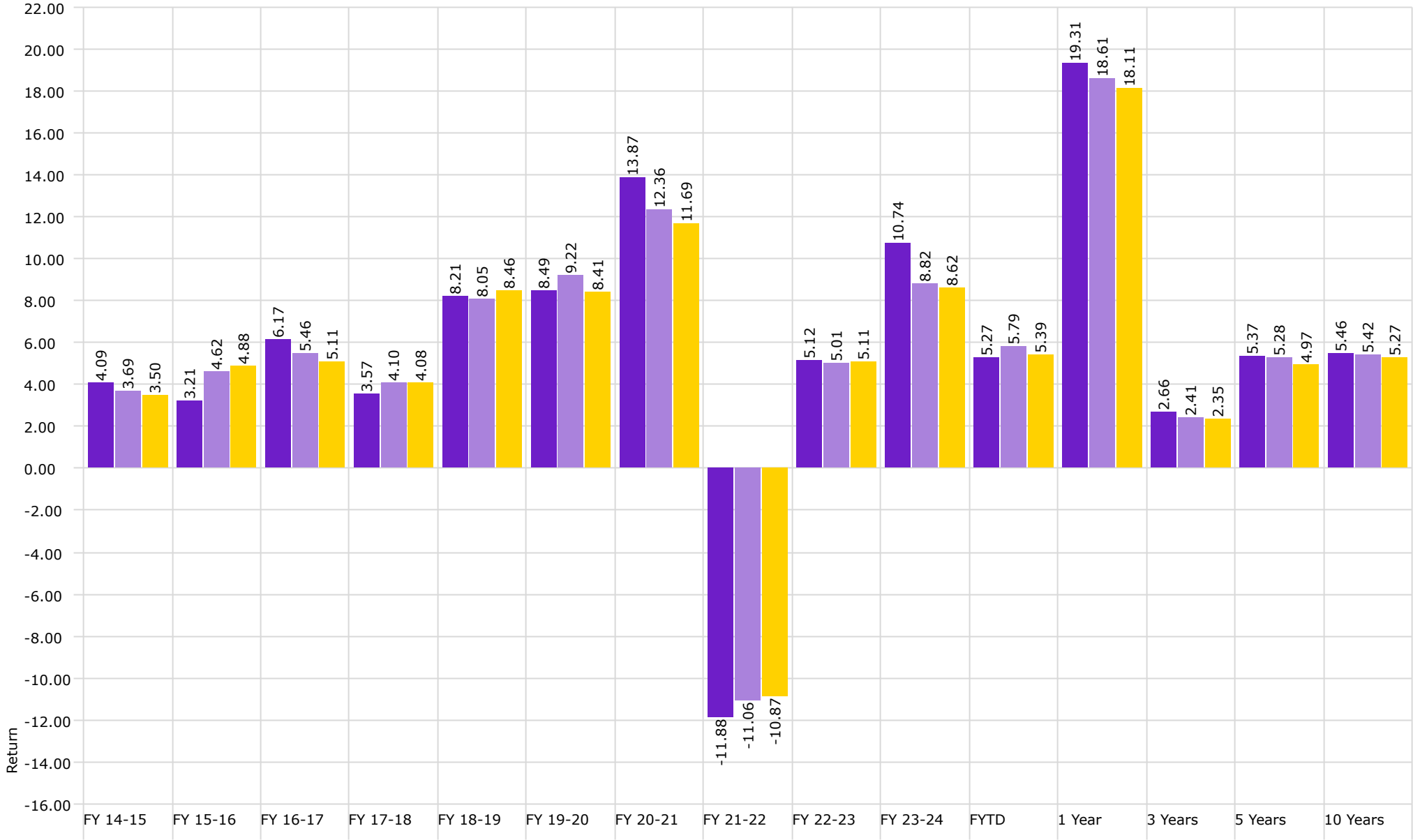
As of 9/30/2024





# Investment Management Program Endowed Accounts **Total Return**

As of 9/30/2024



■ Endowment

■ Osher

■ Endowed Benchmark