

LSU
Deposit and Collateral Report
For the Quarter Ended September 30, 2020

Deposits Requiring Posting of Collateral:	Demand Deposit Sweep/MMA Repurchase	Certificates of Deposit	Total Deposits in Financial Institutions	Collateral (1)
LSU A&M, LSU Alexandria, LSU Eunice, LSU Shreveport, and LSU Health New Orleans				
Chase - LSU, Health Plan Premium	\$ 313,121,104		\$ 313,121,104	\$ 308,340,908
Cottonport Bank - LSU Ag Center	1,294,560		1,294,560	1,554,609
Capital One - LSU-A	6,468,147		6,468,147	6,468,147
St. Landry Bank - LSU-E	477,406		477,406	1,219,006
Campus Federal Credit Union - LSU-S		\$ 100,411	100,411	250,000
Capital One - LSU-S	33,237,405		33,237,405	33,647,154
Chase - HSCNO	59,899,678	18,600	59,918,278	80,889,353
Total	\$ 414,498,300	\$ 119,011	\$ 414,617,311	\$ 432,369,177
LSU Health Shreveport				
JPMC-Shreveport	\$ 89,514,968		\$ 89,514,968	\$ 104,247,821
JPMC-Shreveport Endowment Fds	1,284,010		1,284,010	
Total	\$ 90,798,978	\$ -	\$ 90,798,978	\$ 104,247,821
LSU Health Care Services Division				
JP Morgan Chase (HCSD)	\$ 76,042,944		\$ 76,042,944	\$ 82,250,000
Capital One (MCLNO Trust Fund)	3,698,689		3,698,689	3,767,663
Total	\$ 79,741,633	\$ -	\$ 79,741,633	\$ 86,017,663
Total Requiring Collateral	\$ 585,038,911	\$ 119,011	\$ 585,157,922	\$ 622,634,661
Deposits In Trust or Federal Obligations Not Requiring Collateral				
Federated Money Markets	\$ 8,896,108		\$ 8,896,108	
Federated Funds-Treas. Oblig. (2)	10,043,019		10,043,019	
Total	\$ 18,939,127	\$ -	\$ 18,939,127	
Total Deposits	\$ 603,978,038	\$ 119,011	\$ 604,097,049	

(1) Collateral amounts include FDIC coverage of \$250,000 on Demand Deposits, \$250,000 on CD's and \$250,000 by the National Credit Union Share Insurance Fund on deposits with Campus Federal Credit Union.

(2) One Group & Federated Funds are no-load, open ended mutual funds investing in U.S. Treasury obligations.

LSU
Investment Summary
For the Quarter Ended September 30, 2020

Fund Description	As of 7/1/2020	As of 9/30/2020		As of 12/31/2020		As of 3/31/2021		As of 06/30/2021	
	Value	Cost	Market Value	Cost	Market Value	Cost	Market Value	Cost	Market Value
LSU Health Shreveport									
Current Funds									
Cash/Sweeps S.	\$65,852,590	\$89,514,968	\$89,514,968						
Cash/Sweeps	\$65,852,590	\$89,514,968	\$89,514,968	\$0	\$0	\$0	\$0	\$0	\$0
Treasury Notes (B)	\$34,083,826	\$33,261,475	\$34,653,588						
Agency Securities (B)	\$7,100,869	\$5,106,045	\$5,083,210						
Mortgaged Backed Securities (B)	\$12,947	\$13,287	\$12,820						
Municipal Bonds (E)	\$7,584,432	\$8,209,340	\$8,326,354						
Corporate Bonds (D)	\$32,057,065	\$30,226,897	\$31,983,030						
Total	\$146,691,729	\$166,332,012	\$169,573,970	\$0	\$0	\$0	\$0	\$0	\$0
Endowment Funds									
Cash/Sweeps	\$1,428,396	\$1,284,010	\$1,284,010						
Equity Securities (C)	\$16,804	\$7,650	\$17,245						
Mutual Funds	\$67,050,161	\$60,529,377	\$69,560,847						
Total	\$68,495,361	\$61,821,037	\$70,862,102	\$0	\$0	\$0	\$0	\$0	\$0
Grand Total	\$215,187,090	\$228,153,049	\$240,436,072	\$0	\$0	\$0	\$0	\$0	\$0
LSU HCSD									
Current Funds									
Cash/Sweeps	\$75,956,467	\$76,042,944	\$76,042,944						
Total	\$75,956,467	\$76,042,944	\$76,042,944	\$0	\$0	\$0	\$0	\$0	\$0
Other Funds									
Cash/Sweeps	\$4,798,073	\$3,698,689	\$3,698,689						
Money Market Accounts/Repos (A)	\$8,892,074	\$8,896,108	\$8,896,108						
Equity Securities (C)	\$221,811	\$0	\$170,277						
Total	\$13,911,958	\$12,594,797	\$12,765,074	\$0	\$0	\$0	\$0	\$0	\$0
Grand Total	\$89,868,425	\$88,637,741	\$88,808,018	\$0	\$0	\$0	\$0	\$0	\$0
System Total	\$926,953,578	\$1,095,897,369	\$1,125,035,885	\$0	\$0	\$0	\$0	\$0	\$0

* Negative balance in the cash/Sweeps section of the current funds does not represent an actual negative bank balance, rather it represents a timing difference of the allocation of the current funds.

** Small endowment funds at LSUS were moved to the LSUS Foundation to accommodate Workday.

*** LSU Paid Campuses include the following: LSU, LSU Ag Center, LSUA, LSUE, LSUS, LSU Health New Orleans, and the LSU Pennington Biomedical Research Center.

BENCHMARK NOTES (Example Only)

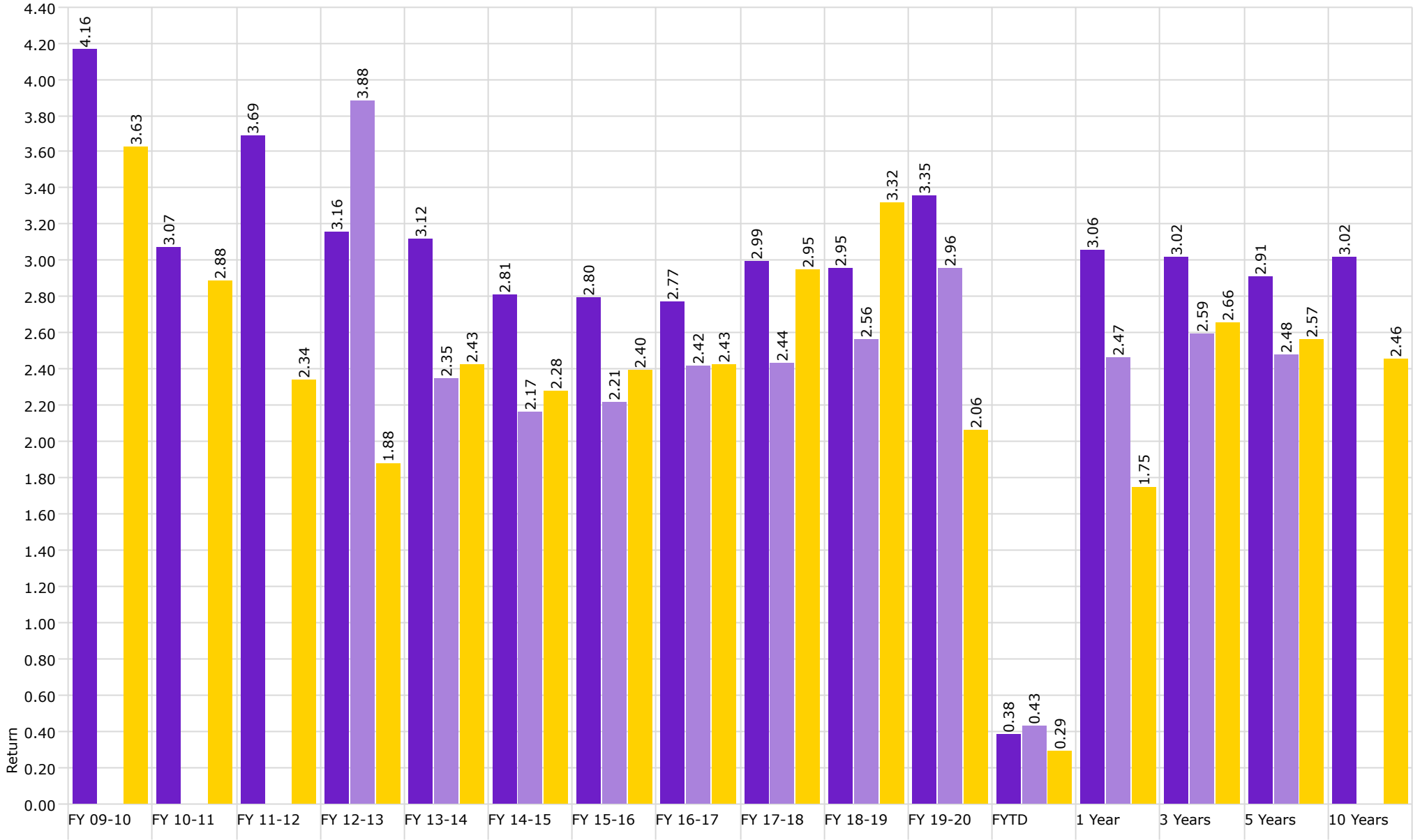
- (A) Benchmarked against 90 day T-Bill
- (B) Benchmarked against Barclay's US Agg Bond TR USD
- (C) US equities benchmarked against Russell 3000 and international against MSCI emerging markets
- (D) Benchmarked against XYZ
- (E) Benchmarked against XYZ

Disclaimer: Pursuant to PM-9, corporate bonds/notes only available for investment beginning 7-1-2011. Louisiana law provides for restrictions on maturity and allocation and may effect benchmark comparisons.



Investment Management Program Non Endowed Accounts **Realized Yield**

As of 9/30/2020



■ Non Endowed

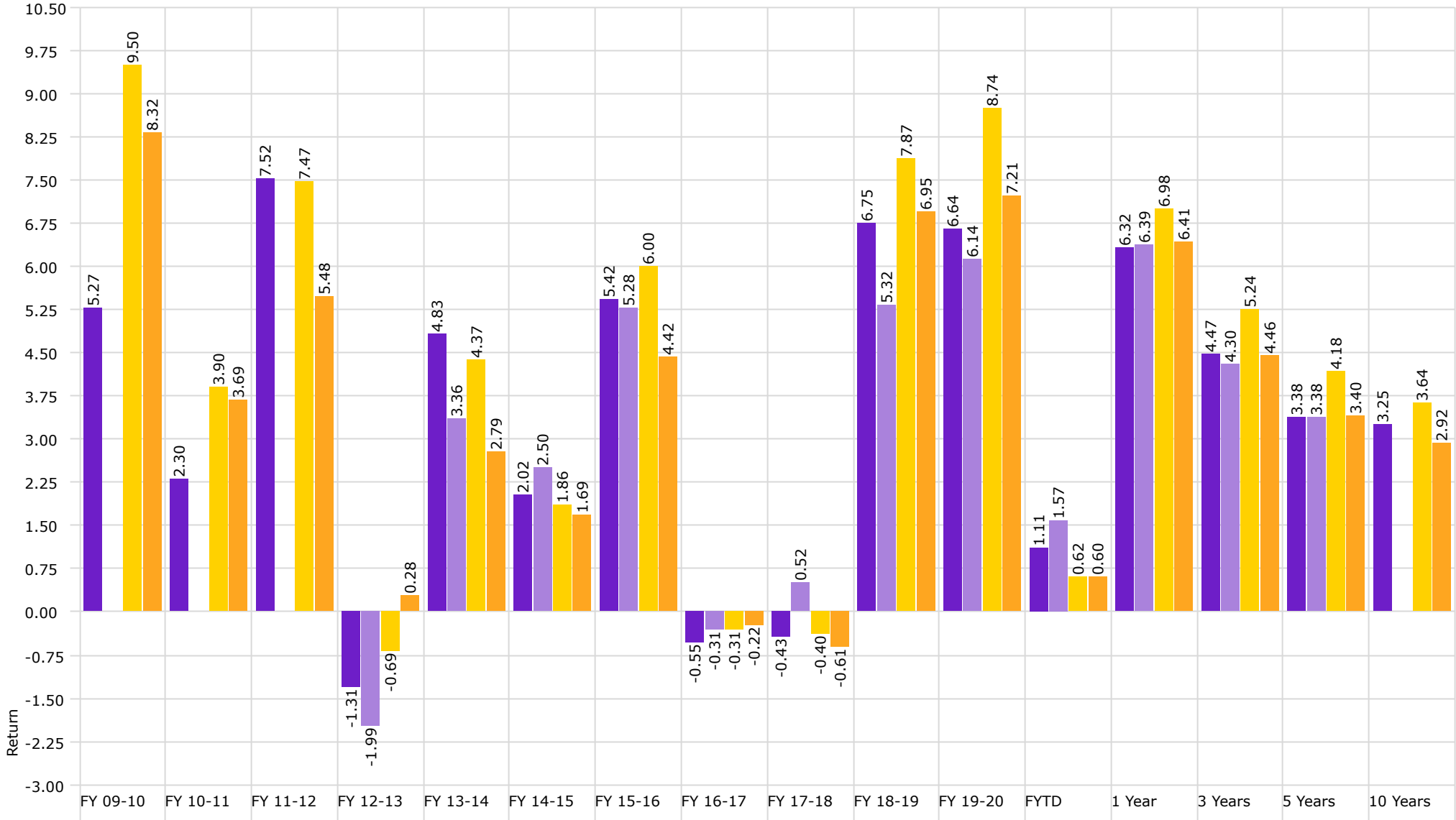
■ Health Plan

■ Barclays Aggregate Bond Index



Investment Management Program Non Endowed Accounts Total Return

As of 9/30/2020



■ Non Endowed

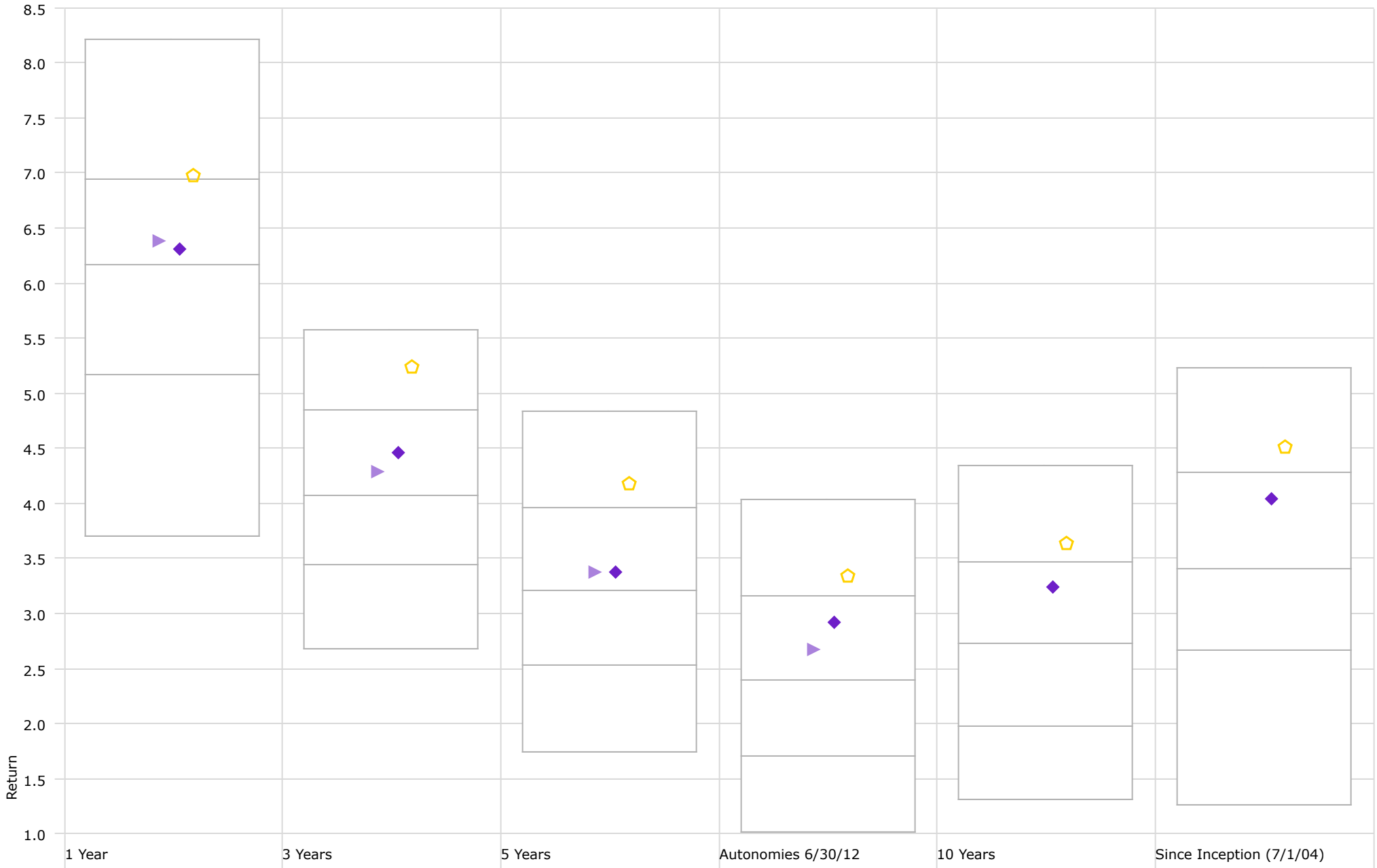
■ Health Plan

■ Barclays Aggregate Bond Index

■ BBgBarc US Gov/Corp Intermediate TR USD

Performance Relative to Peer Group

Peer Group (5-95%): All Managed Investments - U.S. - Intermediate Core Bond



◆ Non Endowed

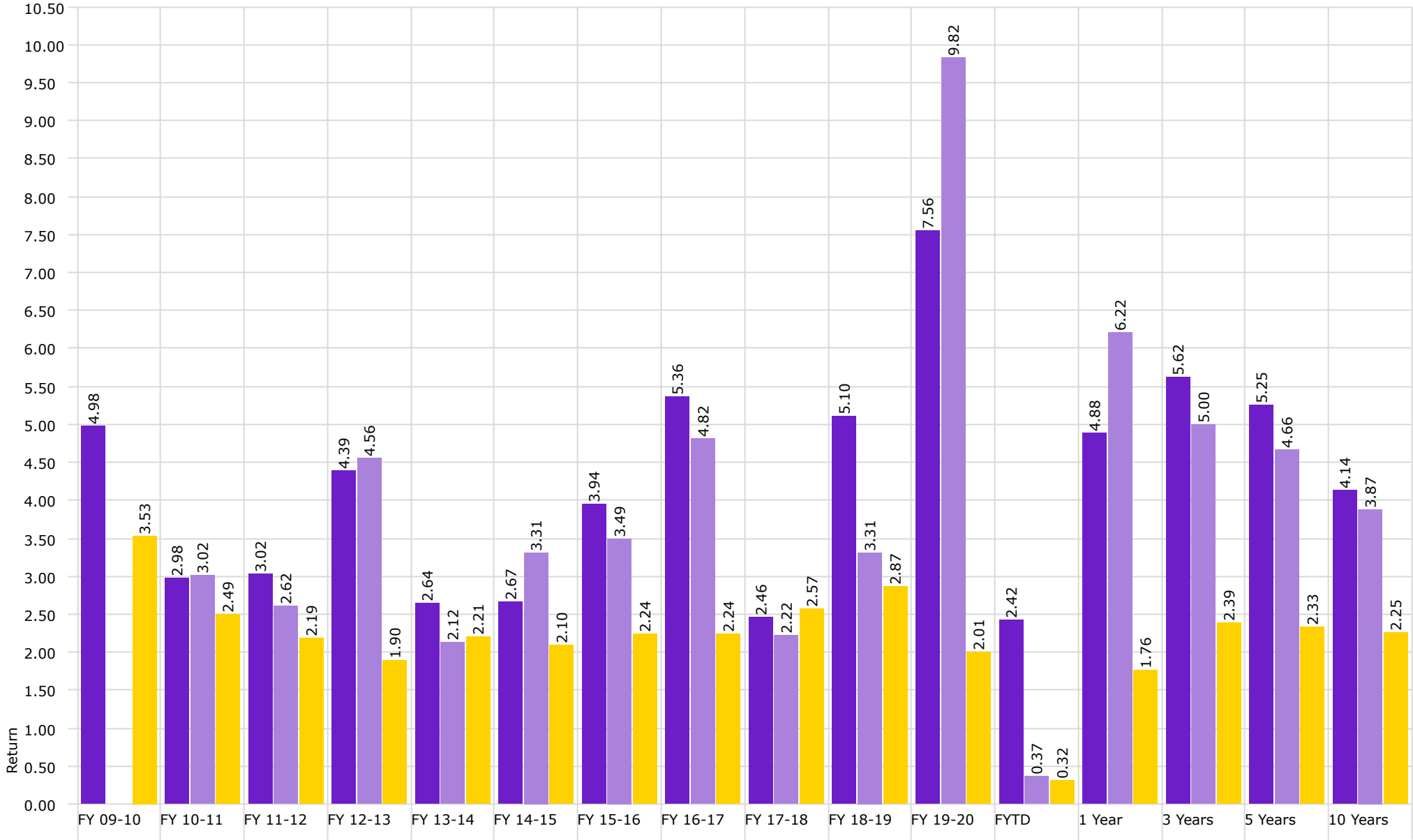
▶ Health Plan

⬠ Barclays Aggregate Bond Index



Investment Management Program Endowed Accounts **Realized Yield**

As of 9/30/2020



Endowment

Osher

Endowed Benchmark



Investment Management Program Endowed Accounts **Total Return**

As of 9/30/2020

